

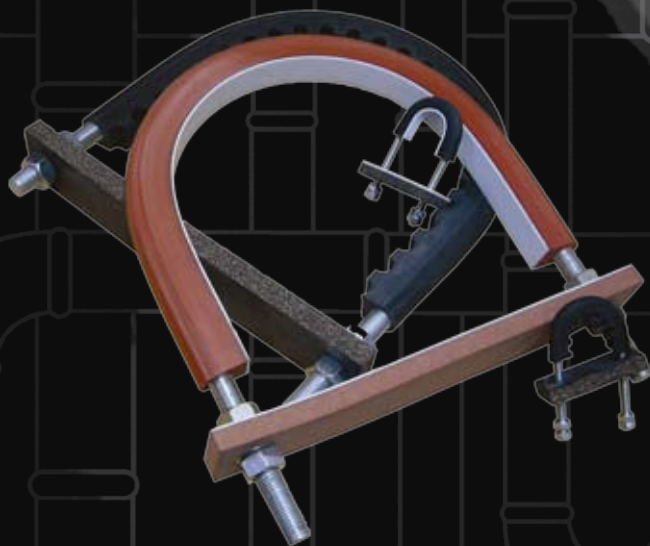


Pipe Support Systems

Tiflex

Many years of experience in manufacturing pipe support systems means the TICO range is all but limitless. Whatever the application, there will be a pipe system to solve your problem. From clamp blocks, to hangers, anti-vibration, high temperatures, isolation, varying metals, sizes etc. we can provide the solution.

pipe support solutions



Features & Benefits

- Fire retardant rubber moulded components do not support the surface spread of flame
- Can be manufactured to meet operational temperatures ranging from -50°C to +300°C
- Pipe support range includes pipe hangers, pipe linings, sliding bearings, blocks and pads for all types of application.
- Wide range of standard sizes
- Various options to suit different pipe constructions from static to moving/expanding pipework.
- Designed by working with offshore specialists
- High quality products
- World renowned for many years
- Quality assurance to BS EN ISO 9001.
- Come to us with your problem and we will provide a solution. Visit www.tiflex.co.uk or call our dedicated technical team on 01579 320808.

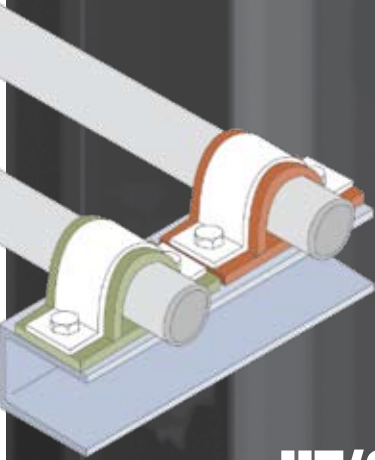
Tiflex

Pipe Support
PSB-170309

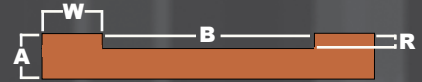
www.tiflex.co.uk

S/CL Clip Strip

Colour: Red
 Hardness (IRHD): $69 \pm 5^\circ$
 Density: 0.80 g/cc
 Operating Temp: -40°C to $+100^\circ\text{C}$

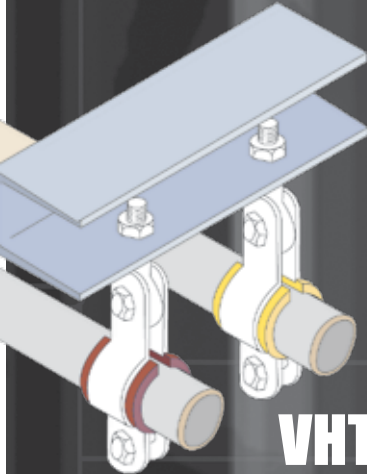


JW Ref Number	Base (A) Thickness	Clip Width (B)	Recess Depth (R)	Wall Width (W)
55-50	3 mm	12.5 mm	1.5 mm	3 mm
55-75	3 mm	19 mm	1.5 mm	3 mm
55-100	5 mm	25 mm	2.5 mm	6 mm
55-125	5 mm	32 mm	2.5 mm	6 mm
55-175	6 mm	40 mm	2.5 mm	6 mm
55-200	6 mm	50 mm	2.5 mm	6 mm
55-250	6 mm	64 mm	2.5 mm	6 mm
55-300	9.5 mm	75 mm	5 mm	12.5 mm
55-400	9.5 mm	100 mm	5 mm	12.5 mm
55-500	9.5 mm	125 mm	5 mm	12.5 mm
55-600	12.5 mm	150 mm	6 mm	19 mm



HT/CL Clip Strip

Colour: Green
 Hardness (IRHD): $69 \pm 5^\circ$
 Density: 0.90 g/cc
 Operating Temp: -40°C to $+150^\circ\text{C}$



JW Ref Number	Base (A) Thickness	Clip Width (B)	Recess Depth (R)	Wall Width (W)
55-50	3 mm	12.5 mm	1.5 mm	3 mm
55-75	3 mm	19 mm	1.5 mm	3 mm
55-100	5 mm	25 mm	2.5 mm	6 mm
55-125	5 mm	32 mm	2.5 mm	6 mm
55-175	6 mm	40 mm	2.5 mm	6 mm
55-200	6 mm	50 mm	2.5 mm	6 mm
55-250	6 mm	64 mm	2.5 mm	6 mm
55-300	9.5 mm	75 mm	5 mm	12.5 mm
55-400	9.5 mm	100 mm	5 mm	12.5 mm
55-500	9.5 mm	125 mm	5 mm	12.5 mm
55-600	12.5 mm	150 mm	6 mm	19 mm



VHT/CL Clip Strip

Colour: Yellow
 Hardness (IRHD): $65 \pm 5^\circ$
 Density: 1.20 g/cc
 Operating Temp: -60°C to $+300^\circ\text{C}$
 Flexibility: Retained after 1 month at $+300^\circ\text{C}$

Base (A) Thickness	Clip Width (B)	Recess Depth (R)	Wall Width (W)
2 mm	35 mm	2 mm	5 mm
2 mm	45 mm	2 mm	5 mm
2 mm	55 mm	2 mm	5 mm
2 mm	65 mm	2 mm	5 mm
2 mm	75 mm	2 mm	5 mm
2 mm	85 mm	2 mm	5 mm
2 mm	95 mm	2 mm	5 mm
2 mm	105 mm	2 mm	5 mm
2 mm	115 mm	2 mm	5 mm



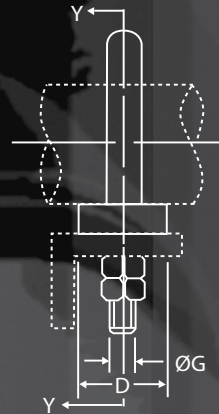
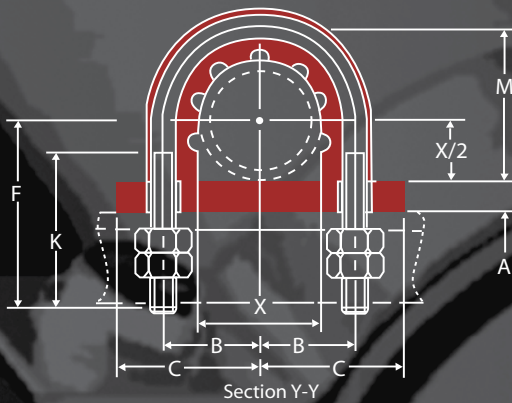
Clip Strips have been designed to provide the highest level of shock and vibration isolation between pipe work and hanger.

Available in three grades for varying applications, Clip Strips fit most common strap widths, are easy to install and can be manufactured to suit temperatures up to 300°C .

Clip Strips



Grip Type



TICO Pipe Grips have been designed specifically to isolate pipes, minimising vibration transmission between pipework and hanger and preventing corrosion between dissimilar metals.

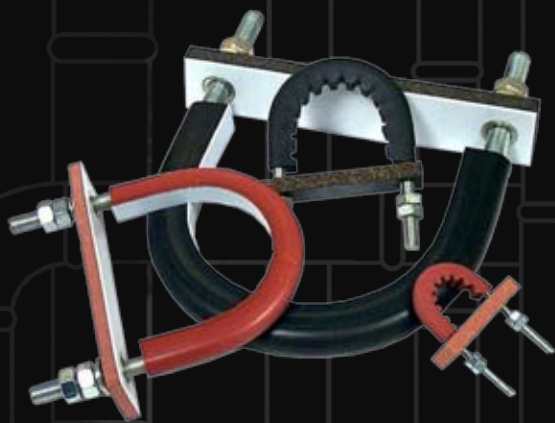
There are two designs of pipe grip, a 'Guide Type' with a PTFE inside surface to allow movement of the pipework, and a 'Grip Type' which securely holds in the pipe in place to prevent movement.

Nominal Pipe Size		Part Number	Dimensions (mm)								
mm	inch		A	B	C	D	F	G	K	M	X
12.70	1/2"	JW 152 - 21	10	18.5	30	25	60	6	57	29	21
19.00	3/4"	JW 152 - 27	10	21.5	34	25	65	6	60	35	27
25.40	1"	JW 152 - 34	10	25	36	25	65	6	60	42	34
31.75	1 1/4"	JW 152 - 43	10	34.5	45	25	70	10	60	56	43
38.10	1 1/2"	JW 152 - 49	10	37.5	49	25	80	10	70	62	49
50.80	2"	JW 152 - 61	10	43.5	55	25	90	10	75	74	61
76.20	3"	JW 152 - 89	10	57.5	70	25	100	12	75	102	89
101.60	4"	JW 152 - 115	10	70.5	83	25	110	12	75	128	115
152.40	6"	JW 152 - 168	15	105	123	50	180	16	120	189	168
203.20	8"	JW 152 - 219	15	131	150	50	199	16	120	240	219

For stainless steel pipes O/Ds of pipes are based on BS 3974 Part 1 1974 Table 10

Nominal Pipe Size		Part Number	Dimensions (mm)								
mm	inch		A	B	C	D	F	G	K	M	X
12.70	1/2"	JW 153 - 16	10	16	30	25	60	6	54	24	16
19.00	3/4"	JW 153 - 25	10	20.5	34	25	65	6	58	33	25
25.40	1"	JW 153 - 30	10	23	36	25	65	6	61	38	30
31.75	1 1/4"	JW 153 - 38	10	32	45	25	70	10	62	51	38
38.10	1 1/2"	JW 153 - 45	10	35	49	25	80	10	70	57	44.5
50.80	2"	JW 153 - 57	10	41.5	55	25	90	10	75	70	57
63.50	2 1/2"	JW 153 - 76	10	51	67	25	100	12	75	89	76
76.20	3"	JW 153 - 89	10	57.5	70	25	100	12	75	102	89
101.60	4"	JW 153 - 108	10	67	83	25	110	12	75	121	108
152.40	6"	JW 153 - 159	15	100.5	119	50	180	16	120	180	159
203.20	8"	JW 153 - 219	15	131	150	50	199	16	120	240	219

For Cu/Ni pipes (based on seamless 'Kunifer 10' sizes) O/Ds of pipes conform to BS 2871 Part 2 Table 3. BS MA 18 Table 2 BS MS60. Also suitable for O/D stainless steel tubing.



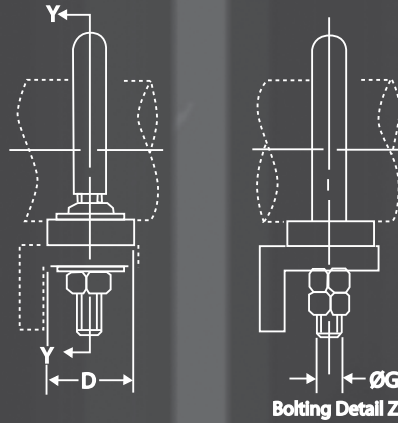
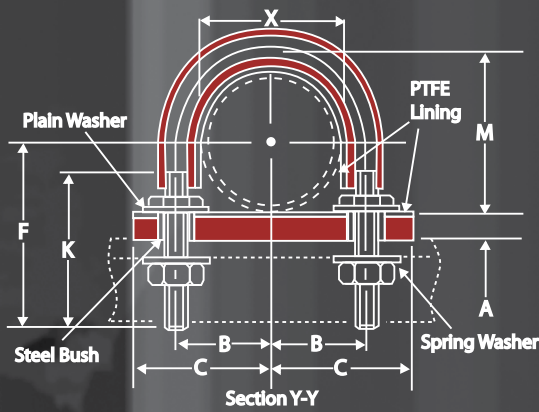
Pipe Grips

www.tiflex.co.uk

Tiflex

Pipe Support
PSB-170309

Guide Type



Key Features and Benefits of Pipe Grips:

Fire retardant rubber moulded components which do not support the surface spread of flame

Easy identification: Red = Cu/Ni
Black = Stainless steel

Low evolution of toxic gases

Operational temperatures range from -50°C to +120°C continuous; 150°C intermittent

High quality zinc plated metal parts as standard, other surface finishes available to customer specification

Manufactured in mild steel BS 4360, Grade 43A. Also available in stainless steel to BS 1449, 316S11

A wide range of standard sizes

Accurate threads mean easy fitting

Provides an unrivalled level of cushioning and support

Serrated inner face on 'Grip Type' provides positive pipe retention

Nominal Pipe Size		Part Number	Dimensions (mm)								
mm	inch		A	B	C	D	F	G	K	M	X
*12.70	1/2"	JW 172 - 21	10	18.5	30	25	60	6	57	29	21
*19.00	3/4"	JW 172 - 27	10	21.5	34	25	65	6	60	35	27
*25.40	1"	JW 172 - 34	10	25	36	25	65	6	60	42	34
31.75	1 1/4"	JW 172 - 43	10	34.5	49	30	70	10	60	56	43
38.10	1 1/2"	JW 172 - 49	10	37.5	53	30	80	10	70	62	49
50.80	2"	JW 172 - 61	10	43.5	59	30	90	10	75	74	61
76.20	3"	JW 172 - 89	10	57.5	77	40	100	12	75	102	89
101.60	4"	JW 172 - 115	10	70.5	90	40	110	12	75	128	115
152.40	6"	JW 172 - 168	15	105	129	50	180	16	120	189	168
203.20	8"	JW 172 - 219	15	131	156	50	199	16	120	240	219

For stainless steel pipes O/Ds of pipes are based on BS 3974 Part 1 1974 Table 10

Nominal Pipe Size		Part Number	Dimensions (mm)								
mm	inch		A	B	C	D	F	G	K	M	X
*12.70	1/2"	JW 173 - 16	10	16	30	25	60	6	54	24	16
*19.00	3/4"	JW 173 - 25	10	20.5	34	25	65	6	58	33	25
*25.40	1"	JW 173 - 30	10	23	36	25	65	6	61	38	30
31.75	1 1/4"	JW 173 - 38	10	32	49	30	70	10	62	51	38
38.10	1 1/2"	JW 173 - 45	10	35	53	30	80	10	70	57	44.5
50.80	2"	JW 173 - 57	10	41.5	59	30	90	10	75	70	57
63.50	2 1/2"	JW 173 - 76	10	51	74	40	100	12	75	89	76
76.20	3"	JW 173 - 89	10	57.5	77	40	100	12	75	102	89
101.60	4"	JW 173 - 108	10	67	90	40	110	12	75	121	108
152.40	6"	JW 173 - 159	15	100.5	129	50	180	16	120	180	159
203.20	8"	JW 173 - 219	15	131	156	50	199	16	120	240	219

For Cu/Ni pipes (based on seamless 'Kunifer 10' sizes) O/Ds of pipes conform to BS 2871 Part 2 Table 3. BS MA 18 Table 2 BS MS60.

Dimensions in mm unless otherwise stated. Non-standard sizes are available upon request.

* See bolt detail Z. These items are without steel bushes and washers.



Sliding Bearings

TICO Bondslip units provide a simple, economical easy to install solution to the problem of accommodating movements in structures; for example due to expansion, contraction, settlement and variations in loading that might otherwise result in the development of high stresses and, potentially damage.

Typical applications of TICO Bondslip Units include:

- Low friction supports in mechanical and pipework installations
- Low friction guide restraints
- Temporary bearings employed during construction

TICO Bondslip Units have been developed over many years of involvement with petrochemical and industrial clients, and proven in thousands of applications worldwide.

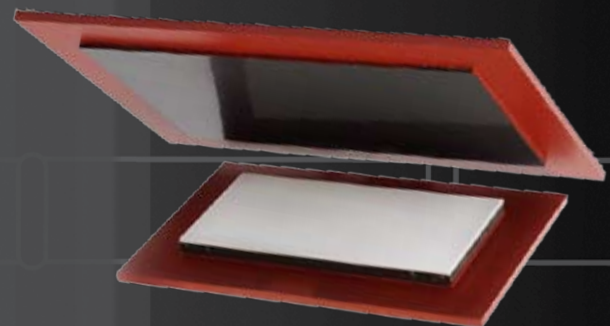
Bondslip Units are custom designed and manufactured for specific applications, please contact us for more information.



Grade	S/PT/PA	Z/PT/PA	RF/PT/PA	PF/PT/PA
Load Bearing Capacity MN/m ²	0.5	1.4	7	15.5

Typical values for the coefficient of friction between the PTFE faced lower members above and TICO S/NG/PA are given in the table below:

Stress MN/m ²	0.7	1.4	3.5	7
Coefficient of Friction	0.09	0.07	0.05	0.04

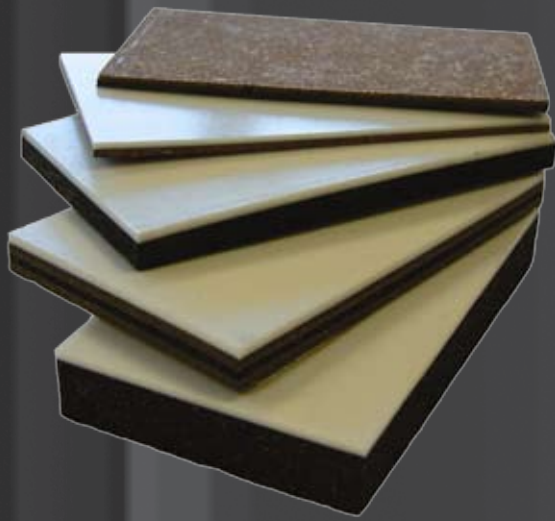


Bondslips

www.tiflex.co.uk



Pipe Support
PSB-170309



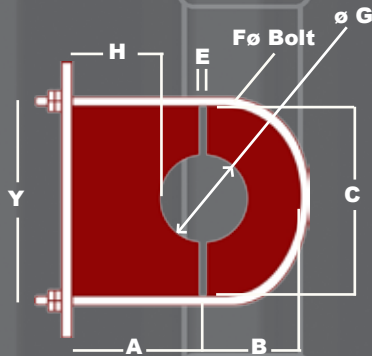
Key advantages of Bond Slip units include:

- **Simplicity & flexibility of design & installation**
- **Maintenance free**
- **Smooth movement without the occurrence of 'stick slip'**
- **Thermally stable & resistant to most environmental conditions likely to be encountered in service**
- **Can be designed to accommodate rotational movement**
- **Bondable substrate which accommodates surface irregularities in the structure**
- **Materials can be supplied factory bonded to steel backing plates under controlled conditions**

Tiflex appreciate the wide variety of applications for TICO Bondslip Units and the differing requirements of each, and hence have made the design of these units as flexible as possible. Tiflex are able to offer custom units incorporating:

- **Steel backing plates for easy installation, or units without backing plates for bonding directly to the structure on site. Steel thickness can be varied to suit the application.**
- **Polished stainless steel plates in place of the standard TICO upper member. Such plates can also be supplied pre-welded to steel backing plates.**
- **Backing plates to the customers specific requirements, e.g. carbon steel to BSEN 10025, stainless steel 316L or 304.**
- **Steelwork coatings to customers specific requirements**
e.g. painted with red oxide primer or other paint systems, hot dip galvanized or plain unpainted.
- **Slots and holes within each member to provide positive location and restraint in one or more directions**
- **One member only, for example for use as a guide stop restraint.**
- **Hypalon edge proofing on the resilient TICO components for additional protection in aggressive environments**
- **Wiper seals for areas heavily contaminated with abrasive dusts and powders to maintain the cleanliness of the sliding faces**
- **Custom shapes and sizes which may not necessarily be square or rectangular**
- **Thermal insulation layers**
- **Different thickness components to suit rotational movements or space restrictions.**
- **Specialist material grades to cope for exceptional loading conditions or elevated temperatures**

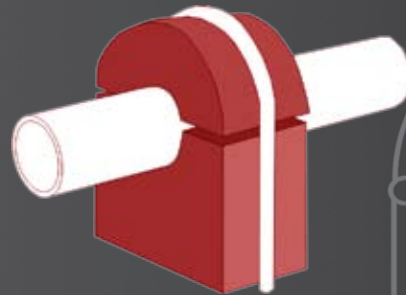
S/CB Clamp Block



JW Part Number	G	A	B	C	Depth	E	H	Y	'U' Bolt ø F
M92-16	16	33	21	42	25	3	25	52	10
M92-25	25	38	30	60	25	3	25	70	10
M92-30	30	40	30	60	25	6	25	70	10
M92-38	38	44	38	76	25	6	25	86	10
M92-45	45	61	38	76	50	6	38	86	10
M92-57	57	67	45	90	50	9.5	38	102	12
M92-76	76	76	57	114	50	9.5	38	126	12
M92-89	89	83	70	140	50	9.5	38	152	12
M92-108	108	104	85	170	75	9.5	50	182	12
M92-159	159	130	110	220	75	12.5	50	236	16
M92-219	219	160	162	324	75	12.5	50	344	20

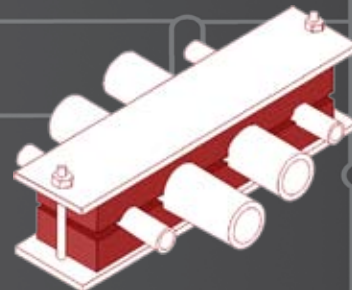
Clamp blocks provide protection and uniform spacing of pipe lines. They absorb shock, noise and vibration caused by fluid velocity and turbulence in pipes, high air velocity ducts, drumming of duct wall etc. which would otherwise be transmitted through the clamp to the surrounding structure or building.

TICO clamp blocks are manufactured singly or in multiple pipe carrying sections as shown.



S/NG/CB Clamp Block

S/NG/CB clamp blocks are identical to S/CB clamp blocks but with the added benefit of a molybdenum disulphide impregnated nylon bush to provide a low friction bore for the accommodation of additional longitudinal movement.



Please contact us if you require a size not specified in the standard range. We can manufacture bespoke clamps to suit specific applications.

Clamp Blocks



Tiflex Limited, Tiflex House, Liskeard, Cornwall, PL14 4NB, United Kingdom
 Tel: +44 (0) 1579 320808 Fax: +44 (0) 1579 320802
 Email: marketing@tiflex.co.uk
 Web: www.tiflex.co.uk

a member of the
James Walker
 Group

